



Welcome!

Welcome to the Autumn issue of the East West Rail Alliance project newsletter.

I wanted to start by thanking everyone who took the time to read and share the last issue of the newsletter. We have seen an increase in the readership of the newsletter and have received feedback on the format with the level of information in the local update sections we introduced in issue two being positive.

As you'll read below, perhaps the most obvious progress we have made since the last newsletter can be seen in Bletchley, where our team has dismantled sections of the Bletchley Flyover ready for it to be rebuilt to modern standards.

The dismantling has demanded a meticulous amount of planning from our team, Network Rail operations, the train operating companies, local authorities and environment agencies and I'm delighted to report all the lifts were safely completed in line with our programme. We are now in the process of removing the final elements of the structure that need to be removed before we can start the rebuild process in November/later this year.

Away from the flyover, we have continued to prepare much of the project footprint for our main construction activities to begin. We have also started work on Charbridge Lane overbridge – one of the most significant construction activities in the East West Rail Phase 2 project. You can read more on this in the content below.

In addition to the challenges Covid-19 presents from an operational perspective, it also presents us with a number of challenges when it comes to keeping residents informed of our progress. This newsletter will therefore become an increasingly important tool as we move through the pandemic, however I am pleased to report that in spite of the challenges, we have continued to engage with key project stakeholders, whether that be via our virtual supply chain engagement events, our socially distanced pop up community engagement event in Bletchley, or working with local charities to help the elderly and vulnerable who have been severely impacted by lockdown restrictions. I am also delighted to welcome our new Community Liaison Advisors, Thaina Sa'id and Vernon Loo, who will play a key role in keeping local communities engaged with the project.

Thank you for your continued interest in the project.

Kind regards

Mark Cuzner, EWR Alliance Director

Enabling works underway



Since the last issue of our newsletter, the Alliance has been preparing many areas across the project footprint for our main construction activities to begin. Highways improvements have been made, with roads widened, passing bays on narrow roads put in place, and access points for our site compounds installed. In addition, we have been constructing 'haul roads', which will enable construction traffic to travel between certain areas of the project without needing to use local roads.

We have also carried out vegetation clearance and drained areas of the old varsity line which have become overgrown and flooded since the line closed in the 1960s. In the Winslow area, in the cutting where the new station will be built, we have been busy installing new drainage, to ensure the line does not flood in future.

As reported in our last newsletter, our archaeology teams have carried out 'strip map and sample' works on a number of sites to ensure there are no archaeologically significant artefacts in the area.

Our Bicester compound is now fully operational, which will be our main compound in the area. This will be the headquarters for our teams in the Bicester area.

We have also started a number of main works activities, in particular, carrying out bridge repairs that need to be made on several existing structures.

Finally, we have begun work on one of the most significant construction activities on the project – the construction of a new road bridge on Charbridge Lane. We have been preparing the site for the construction of a new temporary road which will direct traffic away from the site so the new bridge can be built.

Lift off in Bletchley



A span is lifted from Bletchley Flyover



New Overhead Line Equipment (OLE) is installed



ALO (Any Line Open) protective hoarding is piled and installed

The EWR Alliance has successfully removed 14 spans from the Bletchley Flyover which needed to be dismantled ready for the structure to be rebuilt to modern standards later this year.

The spans previously crossed over the West Coast Mainline and Buckingham Road, and were removed during overnight shifts over consecutive weekends to ensure the West Coast Main Line could remain operational throughout.

The complex lifts have been carried out with the help of three of the largest mobile cranes in the UK - the largest capable of lifting 1200 tonnes! Once the spans were removed from the structure, they were taken to the Alliance compound off Water Eaton Road where they were crushed, with the majority of the stone set to be re-used elsewhere on the project.

With the spans now removed, the team move onto removing the remaining 'piers' which held the spans in place. These will be lifted over similar overnight weekend possessions, following which the process of rebuilding will start in November/later this year.

We are sorry that some of our works in Bletchley have had an unavoidable impact on local residents, particularly those in close proximity to the flyover, with overnight piling works taking place over the weekends and some in the midweek. It is essential we carry out these piling works to erect ALO (Any Line Open) hoardings which are needed to allow our teams safe access to the flyover to complete the rebuild whilst the railway remains open. This overnight piling activity will be complete in November and will mean we no longer need as many weekend overnight possessions. This will speed up the construction and mean less inconvenience for local residents.



To complete the work on the flyover, it has been necessary to close Buckingham Road to road traffic. The current road closure will be in place until early December. During this time a diversion will remain in operation, however pedestrian access has been maintained. On occasions where this has not been possible, the Alliance has provided a free shuttle bus to escort pedestrians around the diversion.

To read more about upcoming works in Bletchley, please refer to the Bletchley section of the local updates below.

Left: one of the spans is transported from Buckingham Road to Water Eaton Road

Introducing our new Community Liaison Advisors



Since the last issue of our newsletter, we have recruited two dedicated Community Liaison Advisors who will be responsible for engaging with key stakeholders, including members of the public across the project to keep you up to date on our progress and respond to your queries and feedback.

Vernon Loo will be covering the area between Bletchley and Little Horwood, including Newton Longville, Swanbourne, Winslow, and Mursley. Thaina Sa'id will be responsible for the areas between Bicester and Verney Junction, including Launton, Stratton Audley, Poundon, Marsh gibbon, Charndon, Twyford, Edgcott, Calvert, Steeple and Middle Claydon.

The easiest way to get in touch with the team should you have any queries or feedback would be to email us at publicinformation@ewralliance.co.uk, or contact us via the 24/7 Network Rail helpline on 03457 11 41 41 or www.networkrail.co.uk/contactus.

Pop up community engagement event held in Bletchley



When lockdown measures were introduced in March 2020, our plans for hosting regular community engagement events were naturally put on hold. However, we believe it is vital for us to engage with the communities in which we are working to help keep local residents and businesses up to date and informed about project progress and so we are visible and approachable as a team.

In late September, the Alliance held two trial pop up community engagement events near our Bletchley site. The team erected a gazebo behind the site barriers at the top of Buckingham Road, with members of the team available between the hours of 10am and 3pm on Tuesday and 3pm and 7pm on Thursday to talk to members of the public about the project.

Clearly, all social distancing measures were followed at all times, with members of the public standing on markers a safe distance from the project team, and only a certain number of people allowed into the area at any one time.

Jeff Booth, Project Leader for our Bletchley works said: “the trial event was a great success and it was really beneficial for us and the people that visited us to talk directly with the team to find out more about the works. We spoke to around 30-40 people on each day and it was great to see so many people interested to learn more about what it is we’re doing.”

We will carry out further events as soon as restrictions permit us to do so, as we are aware people appreciate a face to face chat to discuss the project.

In the meantime, if you’d like to talk to us directly please contact our Community Liaison Advisors Vernon or Thaina at publicinformation@ewralliance.co.uk

Virtual supply chain engagement held

On Wednesday 7 October, the Alliance hosted an online supply chain engagement event aimed at existing supply chain partners as well as prospective suppliers who may be interested in working with the Alliance.

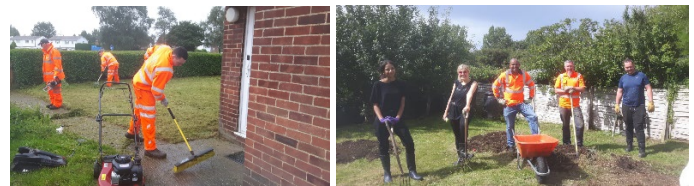
The event was promoted via the Alliance’s [CompeteFor procurement portal](#), and via Buckinghamshire Business First, and with over 200 registrations for the event from 177 different companies, it’s clear there is a lot of interest in the project from across the supply chain.

The event was a chance to bring suppliers up to speed with the status of the project and the progress that has been made and to provide some information on the opportunities that will be available through the project, and share details on our procurement and onboarding processes.

The Procurement & Commercial teams will be hosting similar supply chain engagement events on a quarterly basis.

If you are interested to learn how your business may be able to get involved in the project, be sure to [visit our CompeteFor portal](#) and sign up for alerts. You can also contact the procurement team via email at procurement@ewralliance.co.uk.

Alliance lends a helping hand in community gardening project



Over the summer, 20 members of the Alliance team took part in a number of voluntary gardening projects organised by local charity, Community Impact Bucks.

The teams visited elderly and vulnerable residents - many of whom had been severely impacted by coronavirus lockdown restrictions - to lend a helping hand in their gardens – observing social distancing measures at all times.

Samantha Hardy, from Community Impact Bucks said: “We are extremely grateful to East West Rail Alliance for providing us with 23 of your team members to assist us on our Gardening and Befriending project. Over the 4 days the Alliance team tackled 10 overgrown gardens in Aylesbury, Waddesdon, Quainton and Steeple Claydon which benefited 16 vulnerable elderly/disabled residents.

“The Alliance’s offer of help could not have come at a better time for us and our clients because we were behind on our gardening visits due to the COVID-19 Pandemic. The team’s hard work has really helped towards getting us back on track.”

Newton Longville

1 & 2. New railway works

In this area, the railway works are due to begin in the summer of 2022.

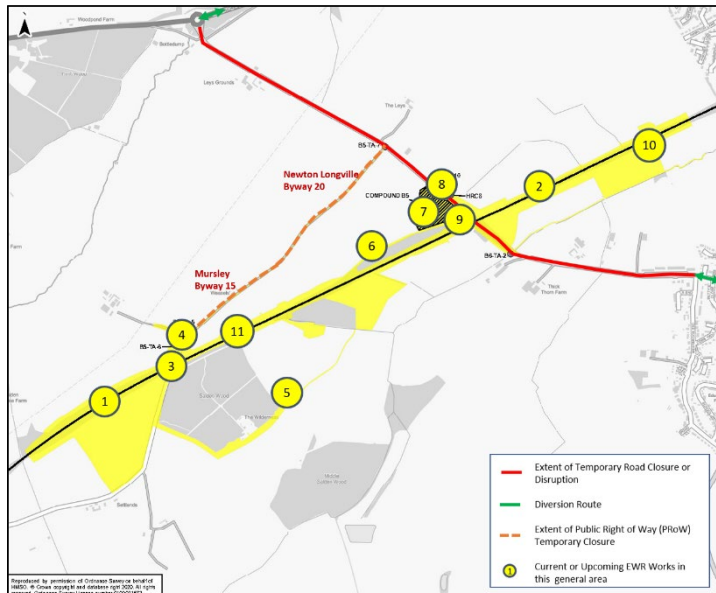
3 & 4. New Saldon overbridge construction

Description: A new road bridge will be built over the new railway line. This will replace the existing bridge which will be demolished after the new bridge comes into use.

Duration: Construction is due to start in winter 2020 and is due for completion in winter 2022.

Disruption: There will be some temporary road closures both partial and full as the new bridge and new road layout is constructed. There will be an increase in construction traffic throughout the work. Mursley restricted by-way will be temporarily closed during the construction.

Upcoming Activity: In winter 2020 the construction site is due to be cleared ready for the new bridge foundations to be constructed in early 2021.



5. Environmental Compensation Site

Description: We will construct a temporary access which will allow us to build a new Environmental Compensation Site (ECS). They include the creation of aquatic habitat features like river back waters, grasslands, scrub and woodland with specific species and features for badger, otter, reptiles, great crested newts, bats, butterflies etc.

Duration: Work is due to start in spring 2020 and is due for completion in summer 2020.

Disruption: There will be an increase in construction traffic whilst the access and ECS is constructed.

Upcoming activity: We will carry out site and vegetation clearance ready for construction work to begin.

6. Haul Road construction

Description: We will construct a new haul road which will allow us to move our construction vehicles and machinery across some of our sites which will minimise disruption to local roads.

Duration: Work will start in autumn 2020 and is due for completion by winter 2020.

Disruption: There will be an increase in construction traffic throughout the work to establish the haul road.

Recent progress: We have carried out vegetation clearance and installed boundary fencing in preparation for the construction of the haul road.

Upcoming Activity: Haul road construction will be carried out in autumn 2020.

7. Whaddon Road, Newton Longville Compound construction

Description: We will build a compound to provide staff welfare and material storage. This compound will also provide an entrance to the temporary haul roads between Saldon Wood and Bletchley.

Duration: Construction of the compound started in summer 2020 and once work has been completed the site will be re-instated to its former condition in early 2023.

Disruption: There will be a temporary road closure of Whaddon road during the construction of the compound access. All road closures will be published on [one.network](#) and appropriate signage will be displayed.

Recent progress: We have installed the perimeter fencing for the compound and have prepared the ground for the construction of the compound.

Upcoming Activity: Construction of the compound will be completed in autumn 2020.

8. Whaddon Road, Newton Longville Compound access construction

Description: We will construct a new access road into the new compound from Whaddon Road. This will allow construction traffic to enter the construction sites from the A4421 without disrupting the local road networks to the south.

Duration: We started constructing the access earlier in the summer and this was completed in late summer.

Disruption: There will be a temporary road closure of Whaddon road during the construction of the compound access. All road closures will be published on [one.network](#) and appropriate signage will be displayed.

Recent progress: The new access into the compound has now been constructed. Traffic signals have been installed at the compound access location.

9. Maintenance yard construction

Description: We will construct a new maintenance yard which will allow future maintenance of the railway to take place once the new line opens.

Duration: Construction will start in the summer of 2022 and is due for completion in the summer of 2023.

Disruption: Whilst the access point is constructed there will be temporary road closures and an increase in construction traffic in the area. All road closures will be published on [one.network](#) and appropriate signage will be displayed.

Upcoming Activity: None until 2022.

10. Haul Road construction

Description: We are constructing a new haul road which will allow us to move our construction vehicles and machinery from the compound on Whaddon Road to Bletchley, keeping these vehicles away from local roads.

Duration: Work started in summer 2020 and is due for completion in late autumn/early winter 2020.

Disruption: There will be an increase in construction traffic during the work to build the haul road.

Recent progress: We have cleared the site and installed perimeter fencing ahead of the construction of the haul road has starting.

Upcoming Activity: Construction of the haul road will be completed in late autumn/early winter 2020.

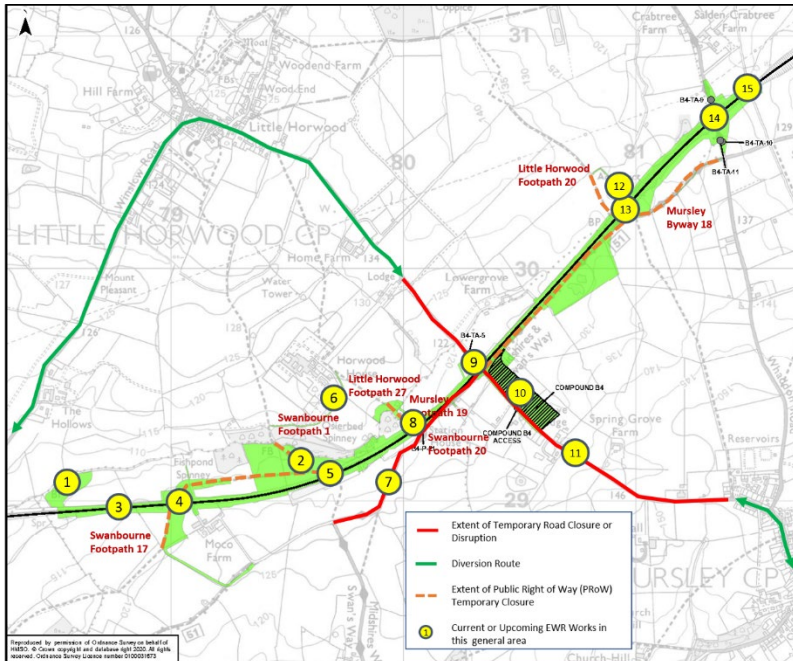
11. Salden Wood drainage

Description: We are installing a new drainage system along the old varsity line in the area next to Salden Wood. This is to drain the area ahead of earthworks needed to construct the new railway beginning in 2021.

Duration: Work to install the new drainage system started in summer 2020 and is due for completion in autumn 2020.

Disruption: There will be an increase in construction traffic during the work to install the drainage.

Recent progress: Drainage installation has now been completed in this area.



Horwood & Swanbourne

1 & 2. Environmental Compensation Sites

These sites have been established to mitigate our impact on the local ecology. They include the creation of aquatic habitat features like river back waters, grasslands, scrub and woodland with specific species and features for badger, otter, reptiles, great crested newts, bats, butterflies etc.

3. Railway works

The location of the new railway we're constructing. In this area, the railway works are due to begin in the summer of 2022.

4. Moco Farm overbridge repairs

Description: The existing bridge at Moco Farm will be upgraded. This will include brickwork repairs, new waterproofing and re-surfacing.

Duration: Work will start in autumn 2020 and is due to complete in Summer 2021

Disruption: There will be temporary, partial closure of the bridge during these works.

Upcoming Activity: Brickwork repairs will start in autumn 2020.

5. Moco Farm footbridge construction

Description: We will be building a new footbridge to allow people to cross the new railway safely.

Duration: We will start construction in late summer 2020 and are due to complete in Autumn 2021

Disruption: The footpath across the railway will be temporarily closed whilst we build the new footbridge.

Recent progress: We have begun clearing the site ready for construction to begin. Piling and foundation works are underway.

Upcoming Activity: We will complete construction of the foundations for the new footbridge in autumn 2020.

6. New footpath construction

Description: We will be building new footpaths to divert the existing footpaths to the new footbridge near Moco Farm.

Duration: We will start to build the new footpath in summer 2021 and this is due for completion in winter 2021.

Disruption: The existing footpath will be temporarily closed whilst the new footpath is constructed.

Recent progress: We have carried out vegetation clearance throughout the area.

Upcoming activity: Construction of the new footpath will commence in summer 2021.

7. Highways improvements - passing bays

Description: We will carry out junction improvements and road widening to allow construction traffic to keep to the agreed construction traffic routes on main roads and minimise traffic using local public roads.

Duration: Highways improvements started in summer 2020 and will continue until autumn 2020.

Disruption: Whilst we carry out the highways improvements there will be temporary full and partial road closures. These will be notified via [one.network](#) and appropriate signage will be displayed.

Recent progress: Construction of the highways improvements began in summer 2020.

Upcoming Activity: These highways improvements will be completed in autumn 2020.

8. Swanbourne Station works

Description: The old Swanbourne station building and platforms are to be demolished and removed to create space for the new railway.

Duration: Work started in late summer/early autumn 2020 and was completed in autumn 2020.

Disruption: There will be an increase in construction traffic near the site.

Recent progress: Demolition of the existing station building and platform has been completed.

9. Horwood road overbridge and junction works

Description: We will refurbish the existing bridge. Works will include new waterproofing, brickwork repairs and new parapets.

Duration: Work started in late summer 2020 and is due to be completed in summer 2021.

Disruption: There will be temporary road closures starting in summer 2020 and throughout the duration of the works. There will also be an increase in construction traffic.

Recent progress: Site clearance works have been undertaken and brickwork repairs are in progress.

Upcoming Activity: The brickwork repair works will continue and are due to be completed in autumn 2020.

10. Station Road, Swanbourne Compound construction

Description: We will build a compound to provide staff offices, welfare facilities and materials storage which will be used throughout the duration of our construction work.

Duration: We started constructing the compound in summer 2020 and once work has been completed the site will be re-instated to its former condition in late 2022.

Disruption: There will be an increase in construction traffic during the construction of the compound.

Recent progress: Perimeter fencing has been installed, the access to the compound has been constructed and the earthworks and drainage works are progressing. In addition, we have constructed a concrete slab to protect a gas main running through the compound.

Upcoming Activity: Construction of the compound will be completed in autumn 2020.

11. Highways improvements - passing bays and junction improvements

Description: We will carry out junction improvements and road widening to allow construction traffic to keep to the agreed construction traffic routes on main roads and minimise traffic using local public roads. There will be temporary road widening along Station Road, and the junction between Horwood Road and Station road will be improved. We will also be constructing an access road for the compound off Green Lane, Twyford.

Duration: Work started in summer 2020 and is due to complete winter 2020

Disruption: There will be temporary full and partial road closures throughout the duration of the construction.

Recent progress: Work on the passing bays and junction improvements has now been completed

12. New footpath construction

Description: We will build new footpaths to divert the existing footpaths to the new footbridge near Swans Way

Duration: We will start to build the new footpath in summer 2021 and this is due for completion in winter 2021.

Disruption: The existing footpath will be temporarily closed whilst the new footpath is constructed.

Recent progress: Vegetation clearance has been carried out throughout this area.

Upcoming activity: Construction of new footpaths will begin in summer 2021.

13. Swans Way footbridge construction

Description: We will be building a new footbridge to allow people to cross the new railway safely.

Duration: We will start construction in winter 2020 and are due to complete in Summer 2022.

Disruption: The footpath across the railway will be temporarily closed whilst we build the new footbridge.

Upcoming Activity: We will be clearing the site ready for construction to start in winter 2020.

14. Whaddon Road overbridge repair

Description: We will refurbish the existing Whaddon Road bridge. Works will include new waterproofing, brickwork repairs and new parapets.

Duration: Work will start in late autumn/early winter 2020 and is due to complete in summer 2023.

Disruption: There will be two phases of road closures on Whaddon Road. The first will be in autumn 2020, the second will be throughout the winter of 2022.

Upcoming Activity: We will start brickwork repairs in late autumn/early winter 2020.

15. Watercourse underbridge repairs

Description: We will carry out repairs and upgrade the bridge that goes under the railway including brickwork repairs and new waterproofing.

Duration: Work will start in winter 2020 and is due for completion by the end of summer 2021.

Disruption: There will be an increase in construction traffic in the area during the works.

Upcoming Activity: We will start brickwork repairs in early 2021.

More Information

This newsletter has been published as a summary of works in the Newton Longville, Horwood and Swanbourne area. If you would like more information on the entire East West Rail Phase Two project, scan the QR Code opposite to read our project-wide newsletter.

