

hs2



Steeple Claydon Parish Council

HS2 – What do we want?



Agenda

- ▶ Introduction
- ▶ Summary of the project
- ▶ Timings
- ▶ Impacts on the village
- ▶ Opportunities for the village
- ▶ Q&A
- ▶ Action plan





Introduction

- ▶ HS2 is coming
- ▶ Activity to date – BCC/ petitioning
- ▶ Opportunities for the village
- ▶ Output from this meeting
 - Understanding the village's views
 - Establish an HS2 team
 - Agree what we want for the village
- ▶ Not here to object to HS2



Summary of the project



- ▶ High speed rail line from London to Birmingham
- ▶ On route of old railway through our area
- ▶ Crossing point with E–W Rail
- ▶ Location of the Infrastructure Maintenance Depot





Timings

- ▶ Royal Assent – February
- ▶ Advance works – power and gas
- ▶ Enabling works – 2017 – 2018
- ▶ Main works
 - Appoint mid 2017
 - Design development and approvals
 - Main works start on site late 2018



Timings



Activities	2016				2017				2018				2019				
	Q1	Q2	Q3	Q4	Q1	Q2	Q3	Q4	Q1	Q2	Q3	Q4	Q1	Q2	Q3	Q4	
Hybrid Bill	BILL PROCESS				Royal Assent												
GI Works	SITE INVESTIGATIONS																
Ecology Surveys	SITE SURVEYS																
Enabling Works						SITE ENABLING WORKS											
Main Works						STAGE 1						STAGE 2					

Enabling works



- ▶ Surveys (ecology, arboriculture, topographic, structural, demolition)
- ▶ Watercourse works including modelling
- ▶ Archaeology
- ▶ Advance planting & landscaping
- ▶ Habitat creation and species translocation
- ▶ Site clearance and compound creation
- ▶ Utility diversions
- ▶ Highway surveys, reviews, upgrades and diversions



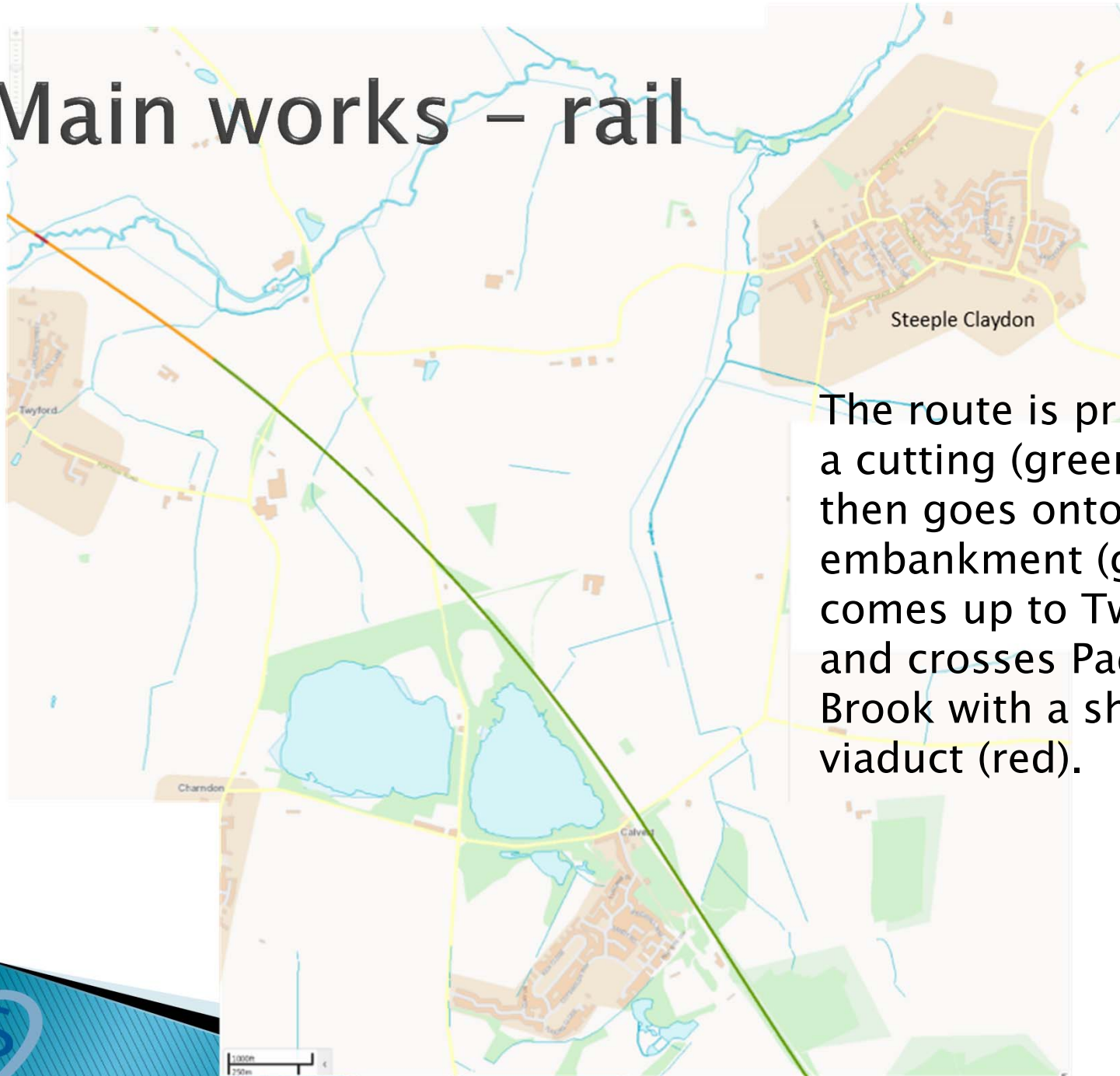


Main works – rail

- ▶ Road diversions and bridges
- ▶ Formation and track bed
- ▶ Overhead power supply
- ▶ Signalling



Main works – rail



The route is primarily in a cutting (green) but then goes onto an embankment (gold) as it comes up to Twyford and crosses Padbury Brook with a short viaduct (red).



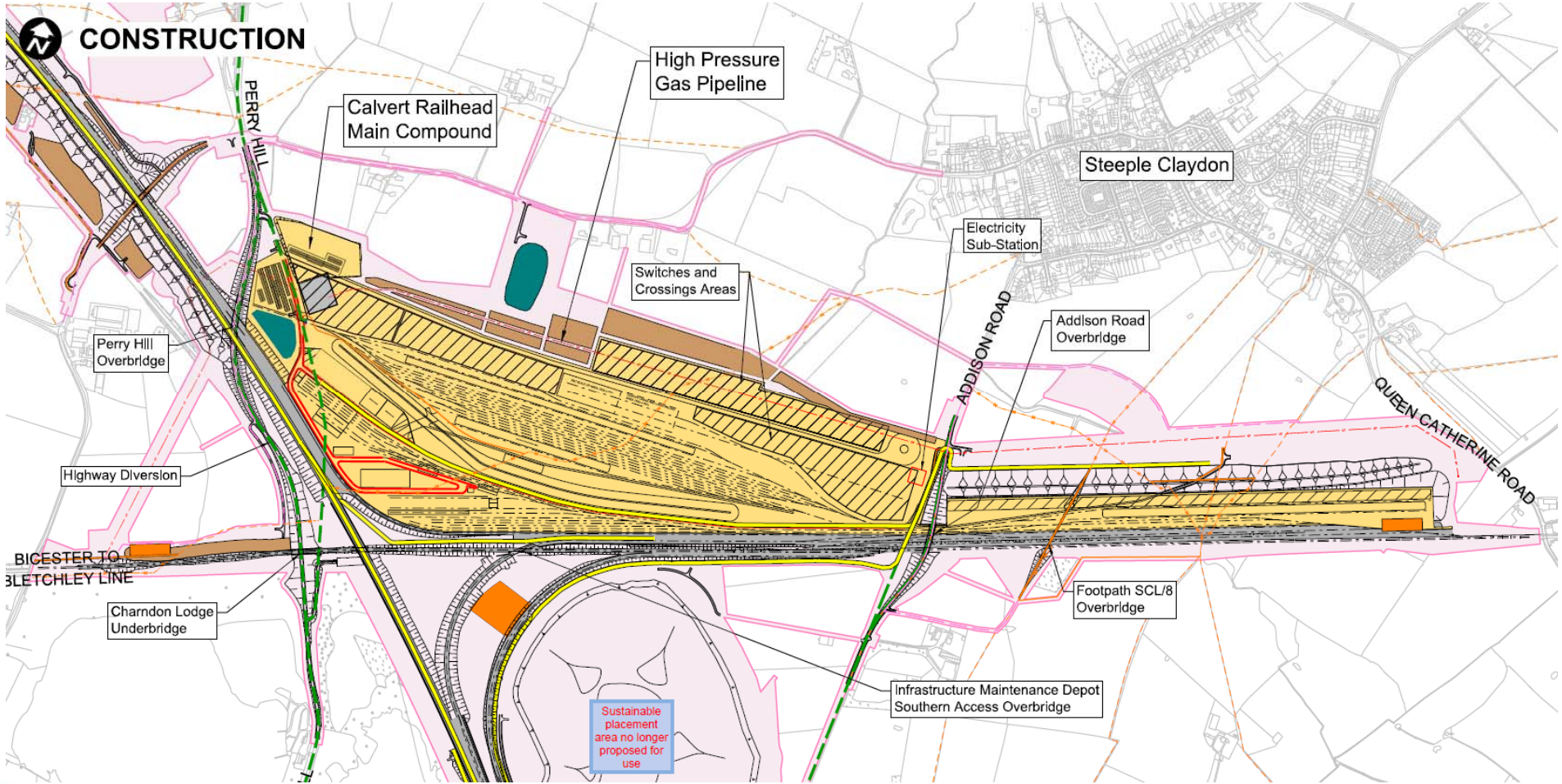
Main works – IMD



- ▶ Earthworks and utilities
- ▶ Siding construction including Calvert Railhead Main Compound
- ▶ Use of site for the stages of construction
- ▶ Main IMD structures
- ▶ Removal of the railhead (2016)



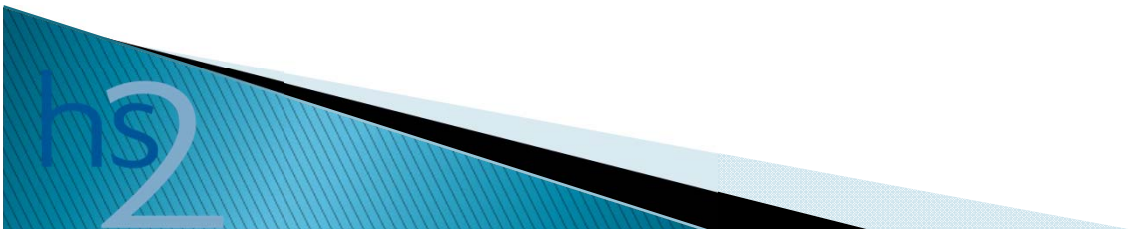
Main works - IMD





First things we'll see

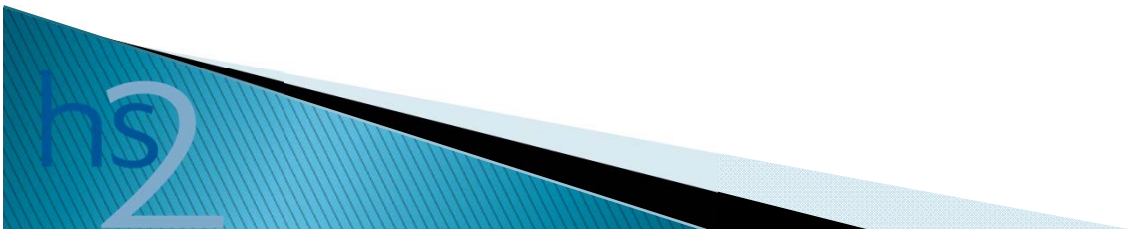
- ▶ Ground investigations
 - Access to agreed borehole positions
- ▶ HV electricity cable – E Claydon to Bicester
 - Major trenching
 - Access points
 - Hedgerow breakthrough points
- ▶ Gas main
 - As electricity
- ▶ Survey work
 - Light vehicles, people, technology



Enabling works



- ▶ First contractor that we will have significant interaction with is the Enabling Works Contractor
- ▶ ‘Fusion’ – a joint venture of three contractors
- ▶ They will work with HS2 to develop the detail
- ▶ When this is done they will share the detail with us
- ▶ We want to be involved in the development of the detail



Why should Fusion care?



- ▶ They will have a penalty and reward mechanism in their contract
- ▶ Complaints and community activities will be significant part of this assessment
- ▶ The contractors have CSR policies encouraging them to engage with those they affect
- ▶ They are required to register with the Considerate Constructor scheme (Video)





Lorry routes

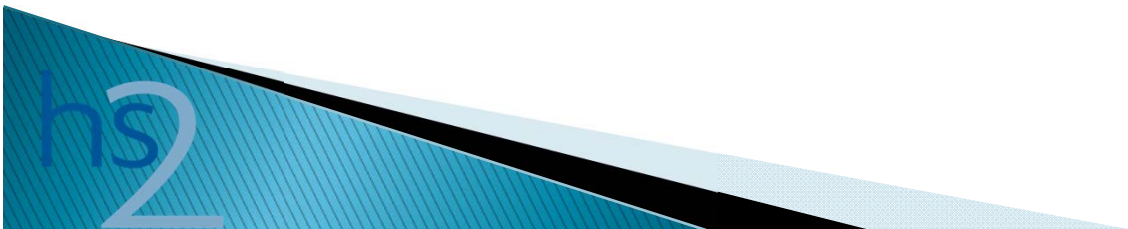
- ▶ HS2 construction lorry routes are identified in the Environmental Statement
- ▶ Traffic flows assessed in the Environmental Statement were anticipated worst case scenario
- ▶ Traffic flows include:
 - HS2 construction staff journeys to work
 - HS2 general construction traffic
 - Mass haul – movement of earthworks
- ▶ Highway Authorities will be consulted on the Local Traffic Management Plan
- ▶ Current consultation



Lorry routes



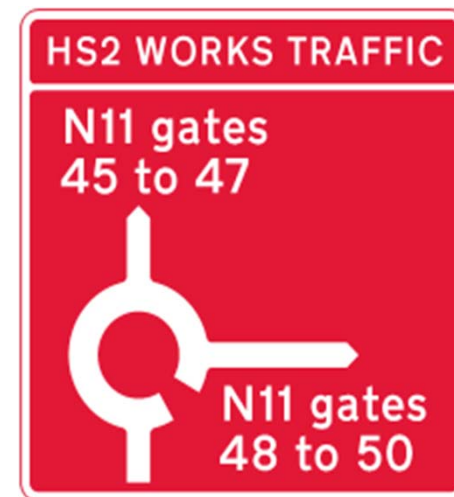
- ▶ Worksites generating more than 24 LGV (>7.5tn) two-way lorry movements a day will require approval from the Local Planning Authority.
- ▶ The Schedule 17 submission for approval will include:
 - List of roads for approval
 - Written Statement (with reference to Local Traffic Management Plan (LTMP) information
 - Plan of the Routes



Lorry routes






- ▶ The Routewide Traffic Management Plan states that Route Management Improvement and Safety Plans (ROMIS) will be prepared to set out the routes to be approved, to consider the physical changes necessary to enable their safe use by Large Goods Vehicles. Changes could include physical changes to the road such as bridges as well as measures such as vehicle tracking or turning restrictions.



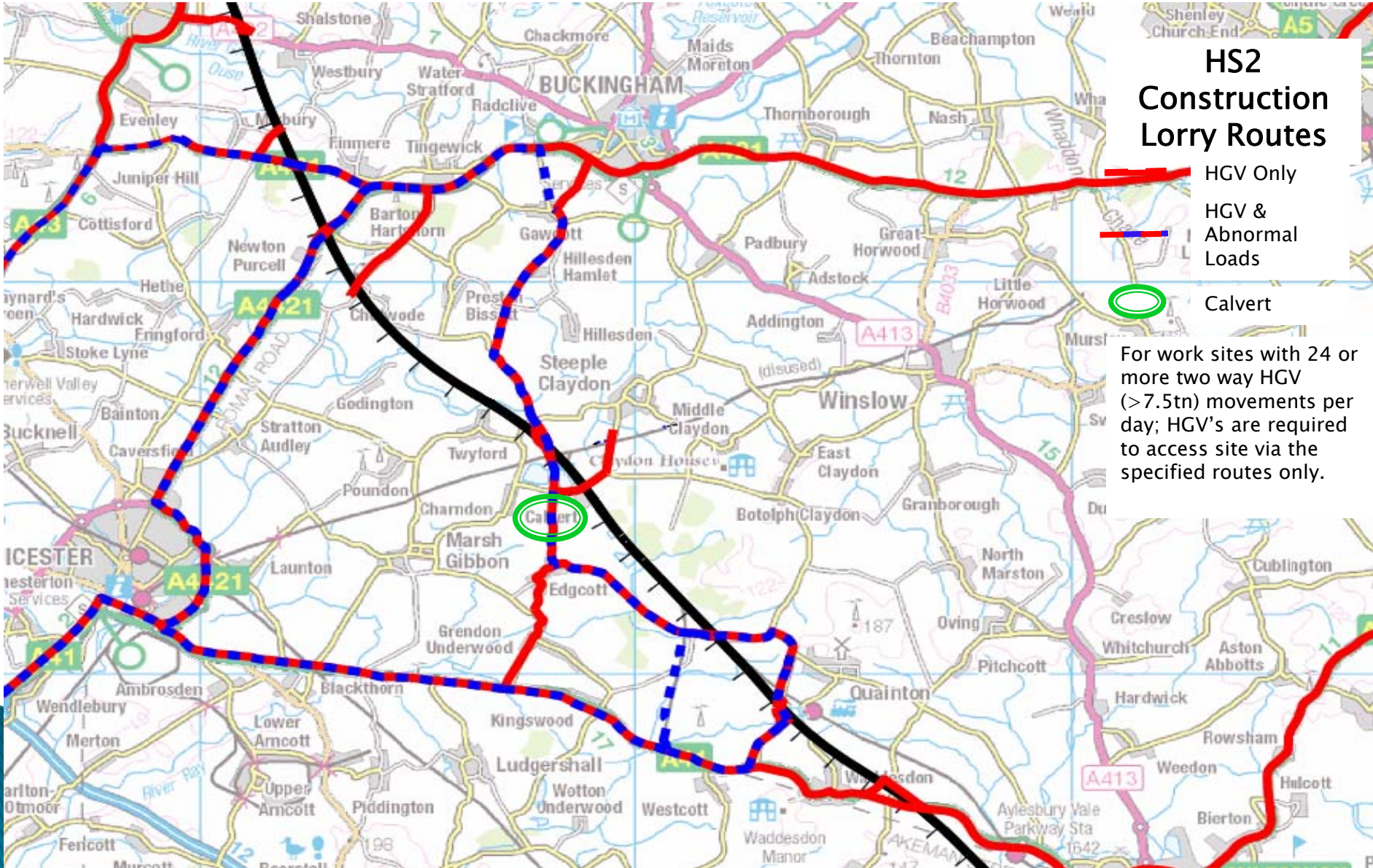
Lorry routes



HS2 Construction Lorry Routes

-  HGV Only
-  HGV & Abnormal Loads
-  Calvert

For work sites with 24 or more two way HGV (>7.5tn) movements per day; HGV's are required to access site via the specified routes only.



What's in it for us?



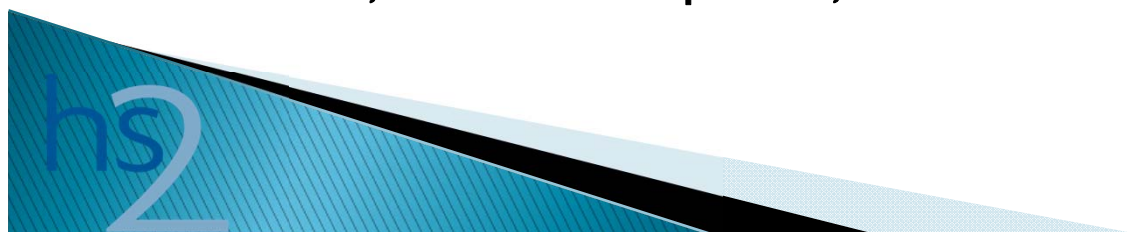
- ▶ Employment opportunities – construction and operation
- ▶ Village improvement – infrastructure
- ▶ Road network improvement
- ▶ A share of the £1m mitigation fund
- ▶ Community Environment Fund
- ▶ Business and Local Economy Fund
- ▶ £15m + access to some of £10m
- ▶ Property compensation for blight



CEF



- ▶ to add benefit over and above committed mitigation and statutory compensation to communities along the route that are demonstrably disrupted by the construction of HS2
- ▶ ‘CEF Local’ will focus on quality of life and environment in individual communities (grants up to £75,000)
- ▶ ‘CEF Strategic’ will focus on large projects across several communities and address strategic concerns (grants from £75,000 to £1 million)
- ▶ applications for both CEF grants will be invited from community-based voluntary organisations, charitable and not-for-profit bodies, social enterprises, schools and local authorities



BLEF



- ▶ to add benefit over and above committed mitigation and statutory compensation to support local economies that are demonstrably disrupted by the construction of HS2
- ▶ for local business support organisations, including local authorities
- ▶ projects which will help maintain business activity in local communities
- ▶ applications will be invited for capital or revenue grants from £10,000 up to a maximum of £1 million





What we might do

- ▶ Install more traffic monitoring
- ▶ Traffic calming
- ▶ More parking
- ▶ One way system round the Co-Op
- ▶ Community projects including
 - Village based information centre
 - Recreation ground investment
 - Footpath network in the village
 - Footpath network around the village
 - Cycle routes – National cycle route and inter-village



Information and contacts



- ▶ HS2 website – search for HS2
- ▶ 24/7 HS2 phone line
- ▶ 24/7 Contractor phone line
- ▶ Local information centre
- ▶ Statements and documents from Bucks CC
- ▶ Statements from AVDC particularly relating to planning
- ▶ Our local forum?



Action plan



- ▶ What do you want
- ▶ How should we manage it?
- ▶ Relationship with the Parish Council
- ▶ Volunteers – leaders and supporters



hs2



Steeple Claydon Parish Council

HS2 – What do we want?